

Bridget Kelly

Printing Shapes, 2024

A story about Joe getting good palliative care

How to use the story



Pages

How to use the story

Page 3

Who made the story

Page 5

What is shared in the story

Page 6

About the story

Page 7

Why we made the story

Page 10

How to use the story



This story is about **palliative care**.

Palliative care is help for people who have a serious health condition that they will die from.



You can ask for help to read this story.

You could ask

- A person in your family
- Your support worker
- A friend.



You can talk to someone you trust about your feelings.



You do not need to read all of the story at the same time.

Not bold

Bold

There are some words in **bold** in this story.

Bold means the letters are thicker and darker.



We explain what these words in **bold** mean.

Who made the story



3DN wrote this story.

3DN is short for the Department of Developmental Disability Neuropsychiatry.



When you see the word ‘we’ it means **3DN**.



3DN is a **research group** at the University of New South Wales Sydney.



A **research group** is people working together to learn more about a topic.

What is shared in this story



We share **Easy Read** information sheets in this story. **Easy Read** uses simple words with pictures.



When you see an **Easy Read** picture it means there is an information sheet.



When you go to the *website link* it will take you to another place on the internet.

About the story



This story is made up and not about a real person.

It might not happen to you.



This story is about Joe.
Joe has a serious health condition.



This story is about Joe getting **palliative care**.



Palliative care is help for people who have a serious health condition that they will die from.



When a person dies it means their body has stopped working and their life has ended.



Palliative care helps people manage their **symptoms** so they feel well until they die.



Symptoms are problems people might have with a health condition.

It might be things like having pain or feeling sick.



Palliative care is managed by **health workers**.

Health workers might include doctors and nurses.

Why we made the story



People with intellectual disability often find it hard to get good **palliative care.**

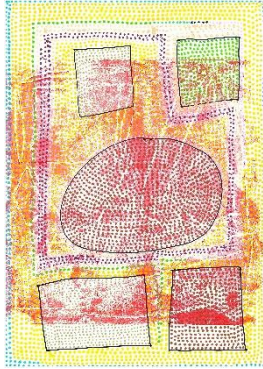


We want people with intellectual disability to have good **palliative care.**



To find the story go to 3dn.unsw.edu.au/resources/improving-palliative-care-easy-read-story

Who made the art



The front and back
cover art was made by
Bridget Kelly.



The art in this story
was shared by Studio
ARTES

www.studioartes.org.au

Artwork by Bridget Kelly

Printing Shapes, 2024

